

Omnibus Amendment 2 Revenue Mapping

Geret DePiper

April 17, 2013

Objective

- Identify the revenue that will be displaced with each closed area alternative
 - Overestimate of closure cost
 - Helps in understanding relative impact of different management areas

Issue

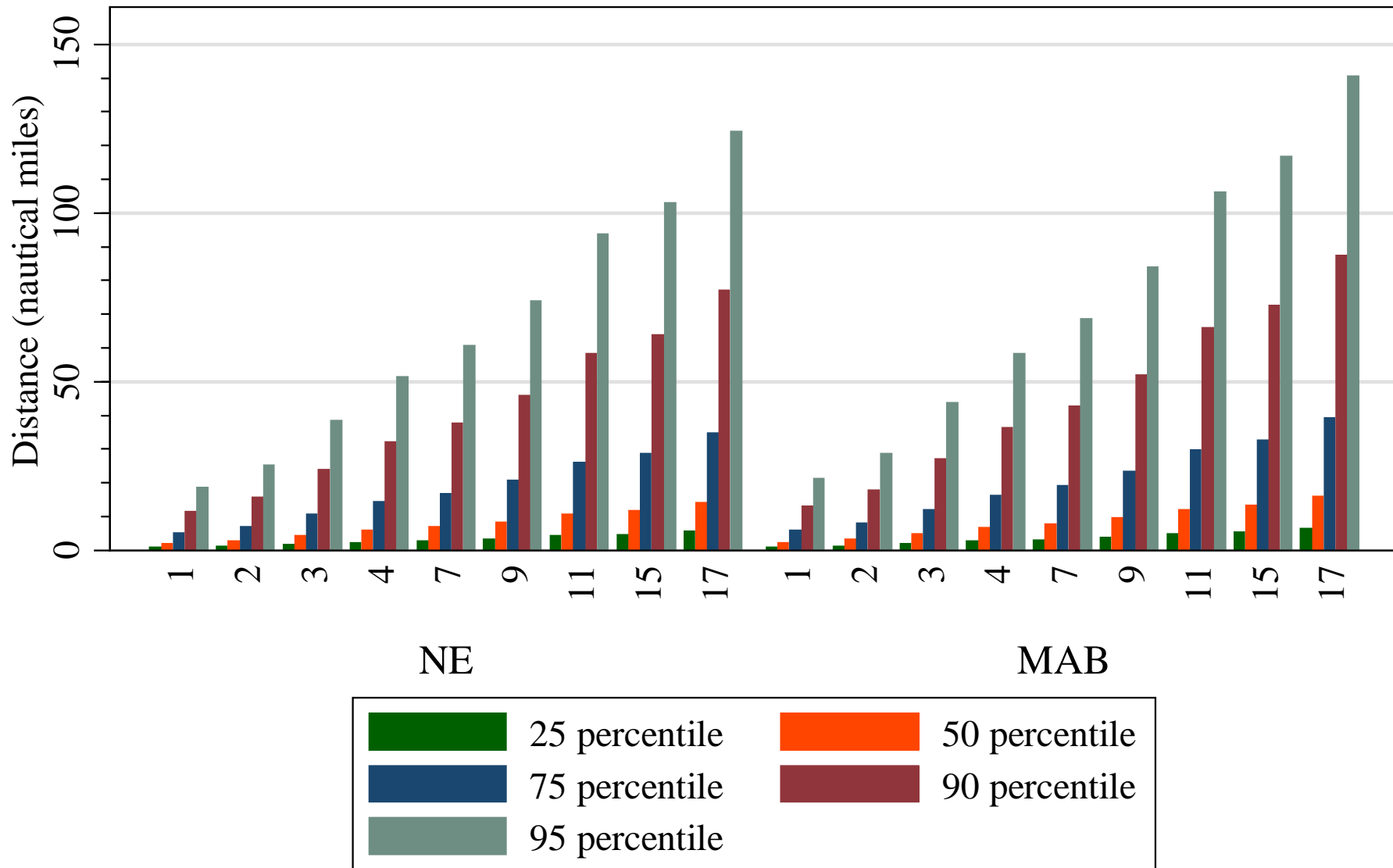
- VTR only census of fishing
- Accuracy of VTR spatial reporting questioned
- Developed mapping technique explicitly considering spatial imprecision

Joined Observed Hauls to VTR

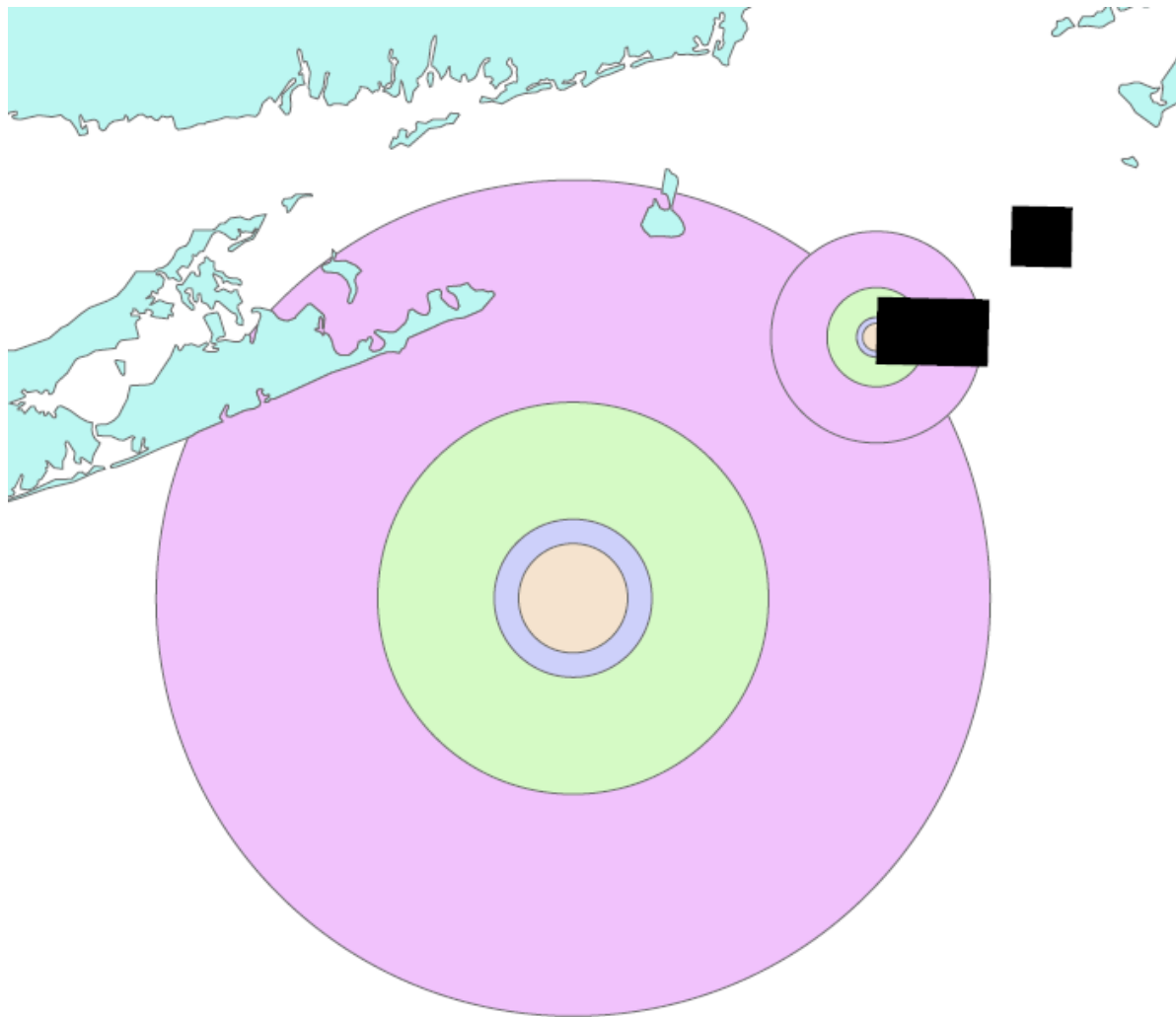
- Estimated distance between each haul and VTR point
 - Gamma distribution
- Generative confidence intervals around VTR points
 - Function of gear, location, trip length
 - 25 percentile distance: 25 percent of all hauls expected to fall within distance from VTR
 - Percentiles calculated: 25, 50, 75, 90, 95

Bottom Trawl VTR - Observed Haul distance

Over Trip Length and Area



Mapped VTR Confidence Bands



2012 Cox Ledge Revenue

	Total Rev	Mean	Median	Std. Dev.	Max
All	\$ 531,363.17	\$ 214.00	\$ 25.07	\$ 615.31	\$ 9,184.00
Sink Gillnet	\$ 268,984.26	\$ 537.97	\$ 226.97	\$ 792.49	\$ 5,016.38
Scallop Dredge	\$ 8,181.30	\$ 409.06	\$ 8.81	\$ 914.70	\$ 2,730.09
SAP Trawl	\$ 692.79	\$ 62.98	\$ 58.87	\$ 61.89	\$ 203.21
Pot	\$ 66,656.49	\$ 59.30	\$ 9.84	\$ 253.60	\$ 6,153.94
Midwater Trawl	\$ 7,591.33	\$ 1,518.27	\$ 1,567.53	\$ 686.73	\$ 2,236.16
Longline	\$ 621.14	\$ 12.94	\$ 5.83	\$ 27.49	\$ 141.35
Clam Dredge	\$ 200.62	\$ 11.15	\$ 6.49	\$ 11.82	\$ 49.19
Bottom Trawl	\$ 178,435.25	\$ 235.71	\$ 41.66	\$ 766.62	\$ 9,184.00